

4G Fast Start and 4G Backup

Gamma offer an option that uses a connection to the Gamma 4G network to provide data access with Ethernet Managed Internet Access. A quote can be created using the Ethernet Pricing Tool and ordered alongside the primary circuit in the usual way.

4G Fast Start provides data connectivity between placing the order and the Ethernet circuit installation.

4G Backup provides data only backup in the event of a total loss of the associated Ethernet service.

Please refer to the Ethernet Service Description for full details.

Step 1:

When specifying the quote is for Ethernet Managed Internet Access it will be possible to select 4G Fast Start as an Additional Service.

AUMIN INTERNAL

Quote Option Details

1 Create New Ethernet Quote > 2 Quote Option Details > 3 Quote Selection

Site Details

Site Postcode: *

Backup Circuit CLI:

Options

Your Reference: ✓

Product: * ✓

Circuit Speed (Mbps): *

Additional Services: Yes

- Cloud Services
- 4G Fast-Start

Advanced Quote Options: No

Step 2:

4G Fast Start and Backup require a good indoor signal on the 4G network to work properly. It is therefore essential to check for coverage at the location where the router is to be placed. A link to the coverage checker is provided if 4G is selected as an Additional Service.

Check coverage & network status.

RG145BY

4G

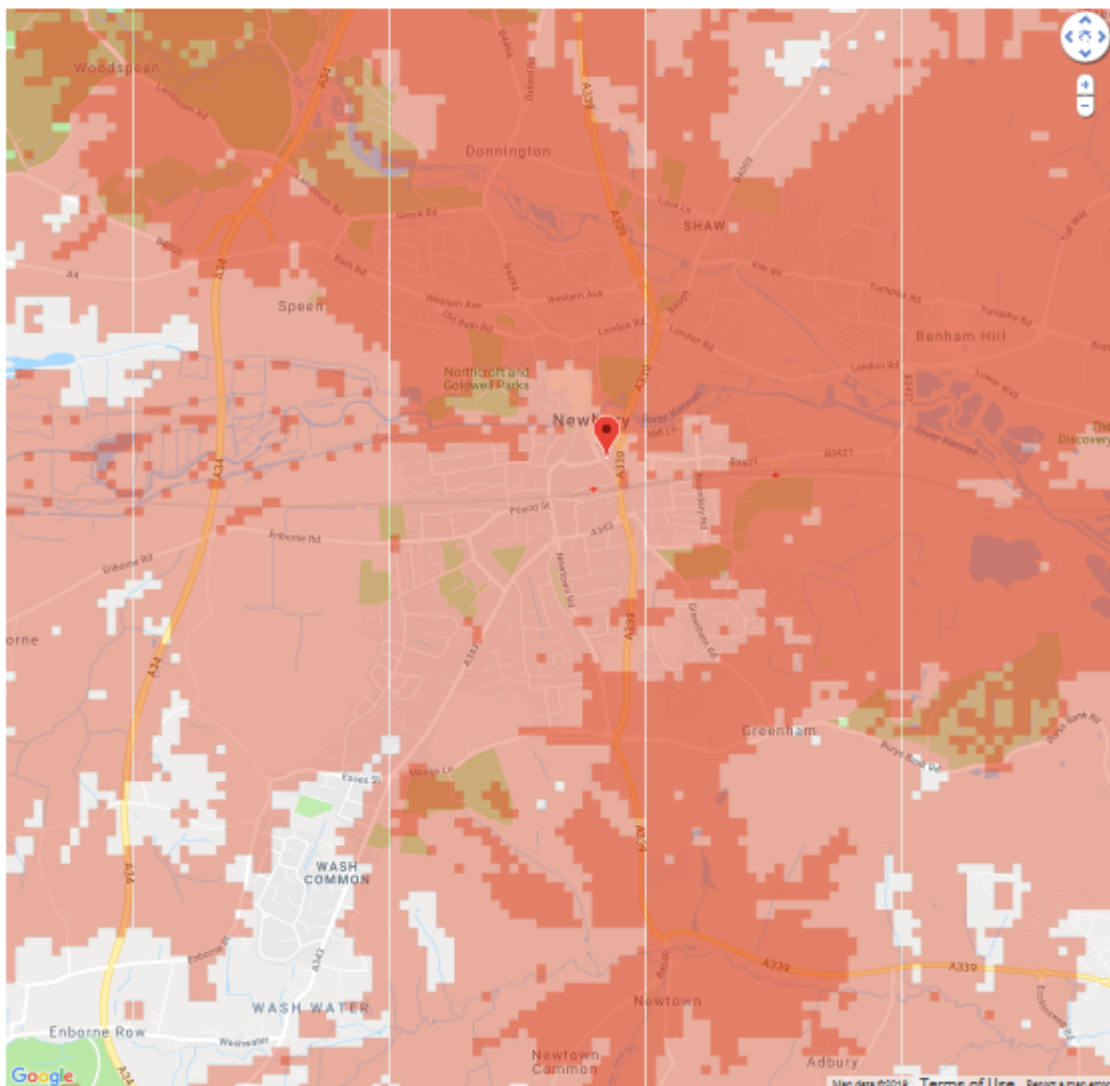
3G

4G coverage in RG145BY

Good service.

You should be able to use the internet in most instances on our 4G network. However indoor signal strength may vary.

Indoor & Outdoor. Outdoor. No Coverage.



*Although we try to make these coverage results as accurate as possible, the information is only a guide and doesn't guarantee service availability in a particular location. Our roll out plans are updated regularly but may change over time.

Step 3:

Please select the Fast Start tariff required – this specifies the amount of data that is included in the monthly rental charge while 4G

1 Create New Ethernet Quote 2 Quote Option Details 3 Quote Selection

Options

Help

Your Reference: Test Quote ✓

Product: * Internet Access (Managed) ✓

Circuit Speed (Mbps): * 10 ✓

Additional Services: Yes

Add Selected >

- Cloud Services

< Remove Selected

- 4G Fast-Start

4G Fast-Start Options

i For all products with a 4G component, it is required that a check for 4G coverage is completed before placing the order. Please [click here](#) to check for coverage at the installation site.

4G Fast-Start Tariff: *

- Please select...
- 50GB 4G Fast-Start
- 100GB 4G Fast-Start
- 250GB 4G Fast-Start
- 500GB 4G Fast-Start

Advanced Quote Options:

Reset Add CES Quote Option

Step 4:

You have now created a quote with 4G Fast Start. Note for services with 4G fast start 4G back-up will be the only Backup options.

Quote Option 1 Details (RG14 5BY, Internet Access (Managed), 10 Mbps, 3 Year Contract , 100GB 4G Fast-Start)

Gamma Ref	Bearer	Supplier	Backup	CPE Router	Lead Time	Bandwidth	Circuit Install	Circuit Rental	Status	Actions
CAE9577865	100Mb Fibre 4G Fast-Start	BT Wholesale Gamma Gold	250MB 4G Backup (Gamma)	Cisco 897VAG	60 Days ~5 Days	10 Mbit/s Variable	-	£232.00 £500.00	Complete	
-	100Mb Fibre 4G Fast-Start	Virgin Media Gamma	250MB 4G Backup (Gamma) - Un	Cisco 897VAG	Virgin Media site is offnet. No prices available.				Unavailable	
CAE9577872	100Mb Fibre 4G Fast-Start	TalkTalk Business Gamma	250MB 4G Backup (Gamma)	Cisco 897VAG	60 Days ~5 Days	10 Mbit/s Variable	-	£247.00 £500.00	Complete	

[← Back](#)
[★ Favourite All](#)
[Download](#)

Step 5

Select Order from the Action drop by the order you wish to convert into a draft order. You will be prompted to complete a 4G coverage check.

You will need to provide details about how the 4G service is to be set up on the 4G Circuit tab:

CES-PRIMARY
4G-CIRCUIT

[4G Details](#)

[Ethernet Online Ordering Guidelines-Help](#)

4G Company Details

Existing Company:

Channel Partner Account: XXXX - Gamma Test 1 - 44000169

Company: *

4G Usage Controls

Warning: Your 4G service does not automatically have usage alerts and caps defined. Please ensure that appropriate usage alerts and caps are defined to avoid unexpected charges. [These usage controls will be applied at the start of the next billing period.](#)

Control Type: *

Threshold (GB): *

Alert at 50% *

Alert at 75% *

Alert at 90% *

Alert at 100% *

Usage Alert Email(s): *

Info: The same thresholds for alerts will be used for both Fast Start and Back Up. These can be amended later.

4G SIM Activation Contact Details

The SIM card for the 4G service will be sent to the same address as the router. Upon receipt of the SIM it must be activated before it can be used to connect to the 4G network.

The details entered below will be included in the letter that is sent with the SIM. The recipient of the SIM will be instructed to contact the Channel Partner using the activation contact name shown below to confirm receipt of the SIM and to request activation.

Activation Contact Name: *

Activation Contact Email: *

Activation Contact Phone: *

The SIM activation details are for the person who will be contacted once the SIM for the 4G service is received. They will access the Gamma portal to activate the service.

It is recommended that usage controls are set as Alert And Cap. Alerts will keep you informed of how much data is being consumed, the cap will prevent unapproved data usage. The data cap can be removed if required in Service Management. The same settings will apply of Fast Start transitions into 4G Backup - these can also be changed in Service Management.

Step 6

Once you have completed all the details of the order you can see a summary before placing the order:

The screenshot shows a 'Quote Details' modal window with the following information:

Main Details		Primary Address	Backup Circuit
Gamma Ref	CAE8802260	Kings House	Type Active/Standby
Reseller Ref	Test Quote	11A	Total Bandwidth (Mbps) Varied
Date Created	04/06/2019 11:17:17	First Floor	Bearer 250MB 4G Backup
Created By	tkershaw	Kings Road West	Carrier Gamma
Service Type	Managed Service	Newbury	
Product Type	Internet Access	RG14 5BY	
Term	3 Year		
Primary Circuit		Backup Address	Prices
Total Bandwidth (Mbps)	10.0 Mbit/s	Same as Primary Address	4G Fast-Start Rental £500
Bearer	100Mb Fibre		<i>4G fast-start rental is a monthly charge that includes the data allowance selected until the primary circuit is implemented.</i>
Carrier	BT Wholesale		Circuit Install Charge £0
CLI	-		Backup Install Charge £0
CPE	Cisco 897VAG		Total Install Charge £0
Additional Services			Monthly Circuit Rental £227
4G Fast-Start Tariff:	100GB 4G Fast-Start		Monthly Backup Rental £5
Please ensure you are aware of the applicable Gamma SLA, click here for details .			Total Monthly Charge £232

A 'Close' button is located at the bottom right of the modal window.